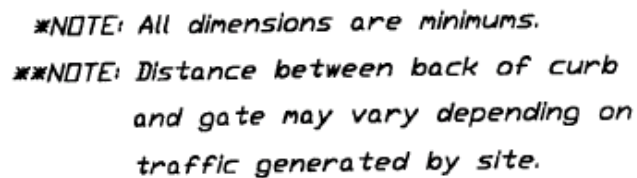
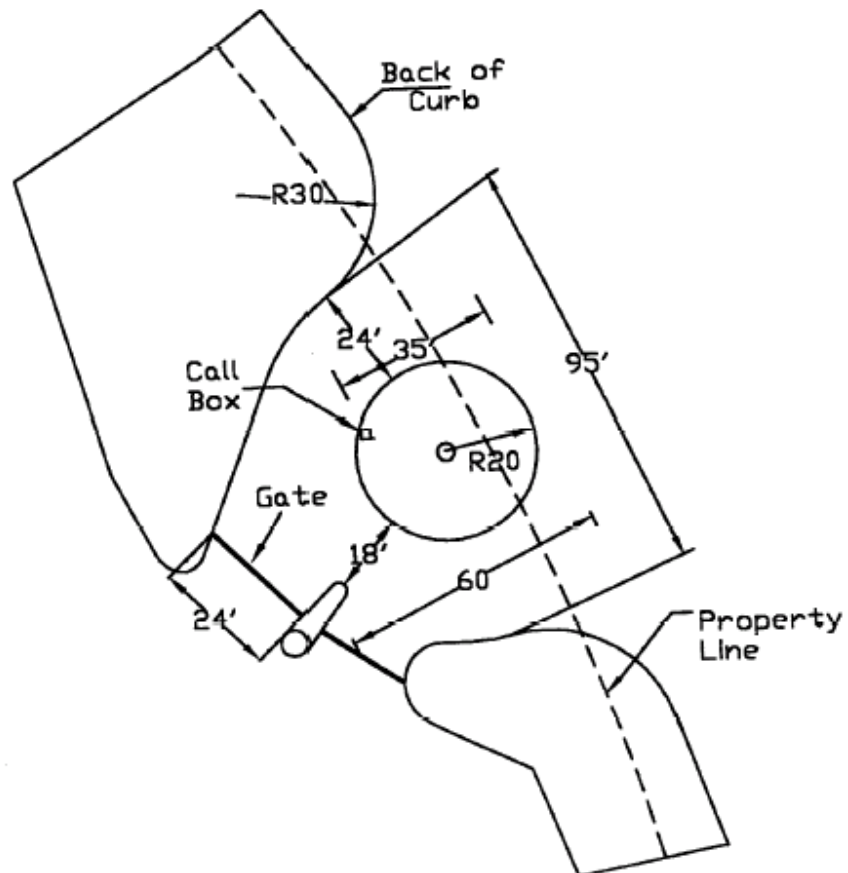


Typical Residential Gated Entry Design



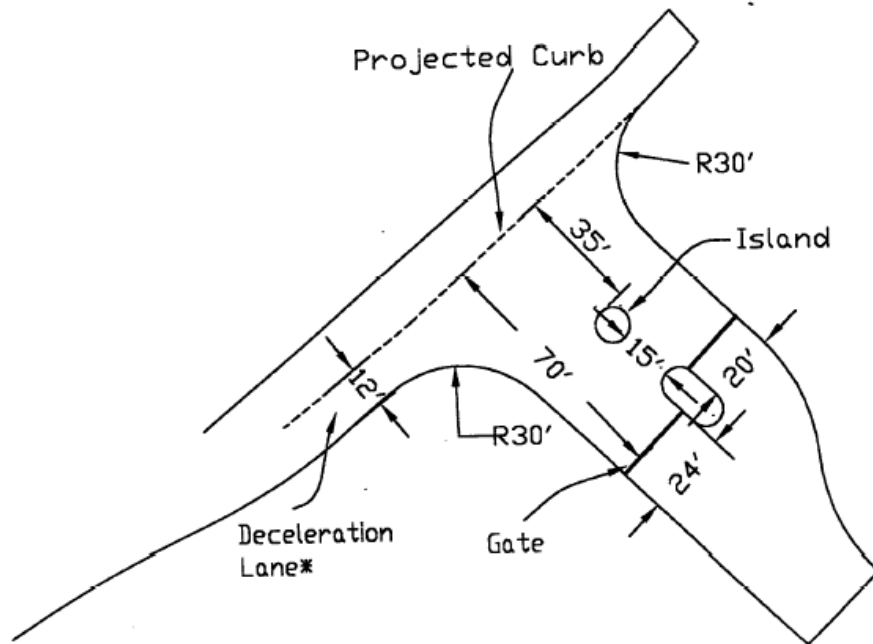
***NOTE: Distance between back of curb and gate may vary depending on traffic generated by site.

Circular Gated Entry



**NOTE: All dimensions shown are minimums.*

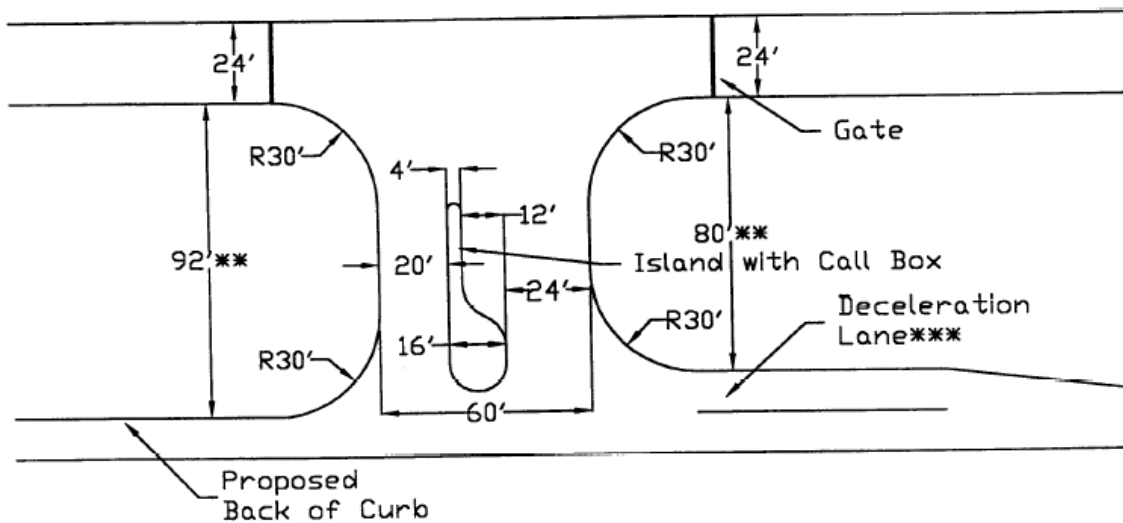
Gated Entry for High Volume/High Speed Entry Way



**NOTE: Deceleration Lane length varies based on traffic generated.
Minimum length=75'*

***NOTE: All dimensions shown are minimums*

Typical Multi-family Gated Entry Design



*NOTE: All dimensions are minimums.

***NOTE: Distance between back of curb and gate may vary depending on traffic generated by site.

***NOTE: Deceleration lane length may vary depending on traffic generated by site.