

PUBLIC HEARING

ZONING CASE: PD21-8

PUBLIC HEARING DATES: 04/07/21 (Planning and Zoning Commission)
05/04/21 (City Council)

GENERAL LOCATION: 6214 Roby Drive; generally located at the east of US 287 and south of West Sublett Road

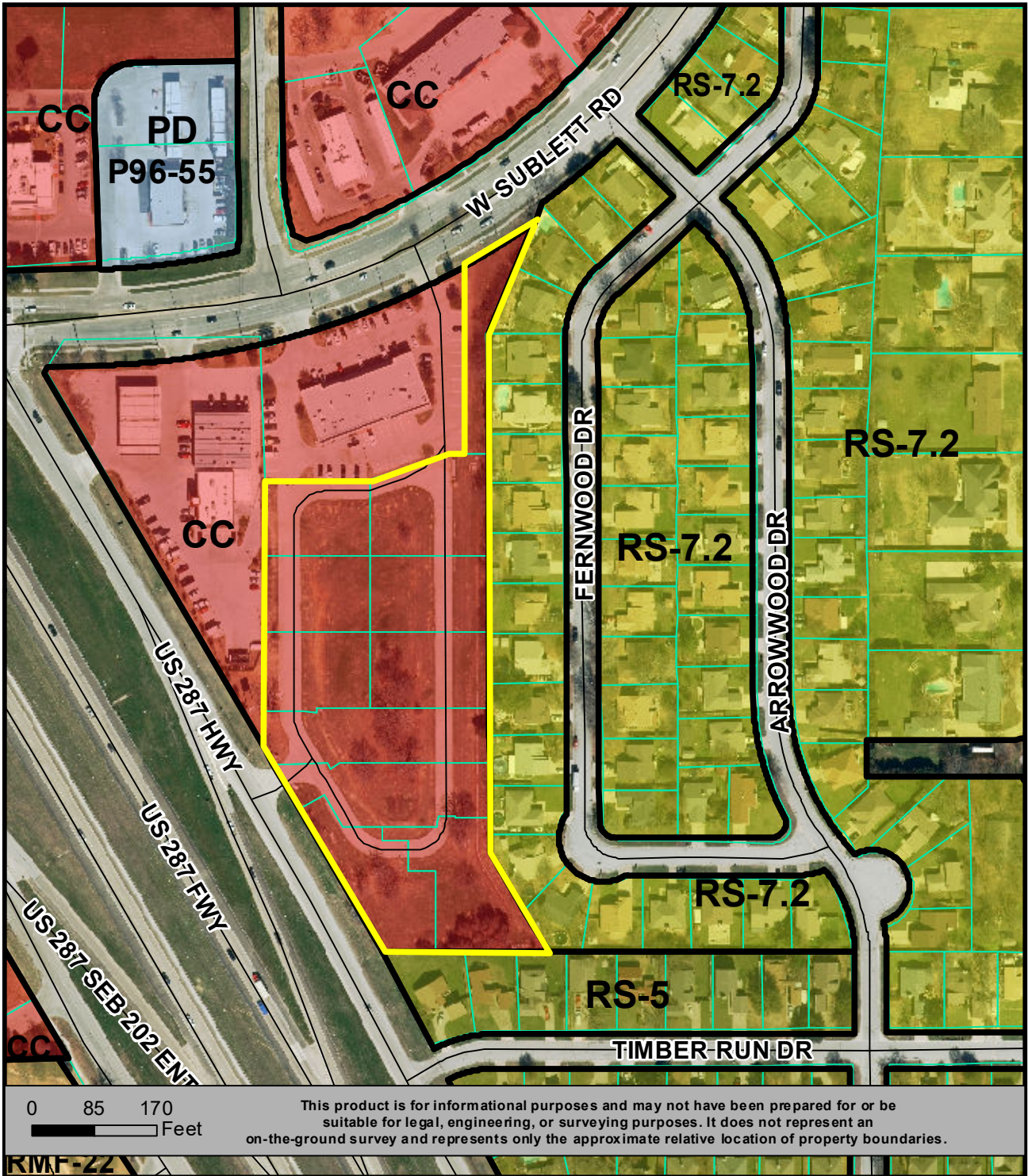
CURRENT ZONING: Community Commercial (CC)

REQUESTED ZONING: Application for approval of a Planned Development for Residential Medium Density (RM-12) uses with a Development Plan on approximately 4.530 acres

APPLICANT: mma, inc./ represented by Michael Martin

OWNER: Nephserv, LLC/ represented by Kishore Ponugula

For additional information concerning this upcoming public hearing, call Kevin Charles in Planning and Development Services at 817-459-6515 and refer to PD21-8.



**LOCATION MAP
PD21-8**

**PD FOR RM-12 WITH
A DEVELOPMENT PLAN**

