

PUBLIC HEARING

ZONING CASE: PD21-24

PUBLIC HEARING DATES: 08/18/21 (Planning and Zoning Commission)
09/07/21 (City Council)

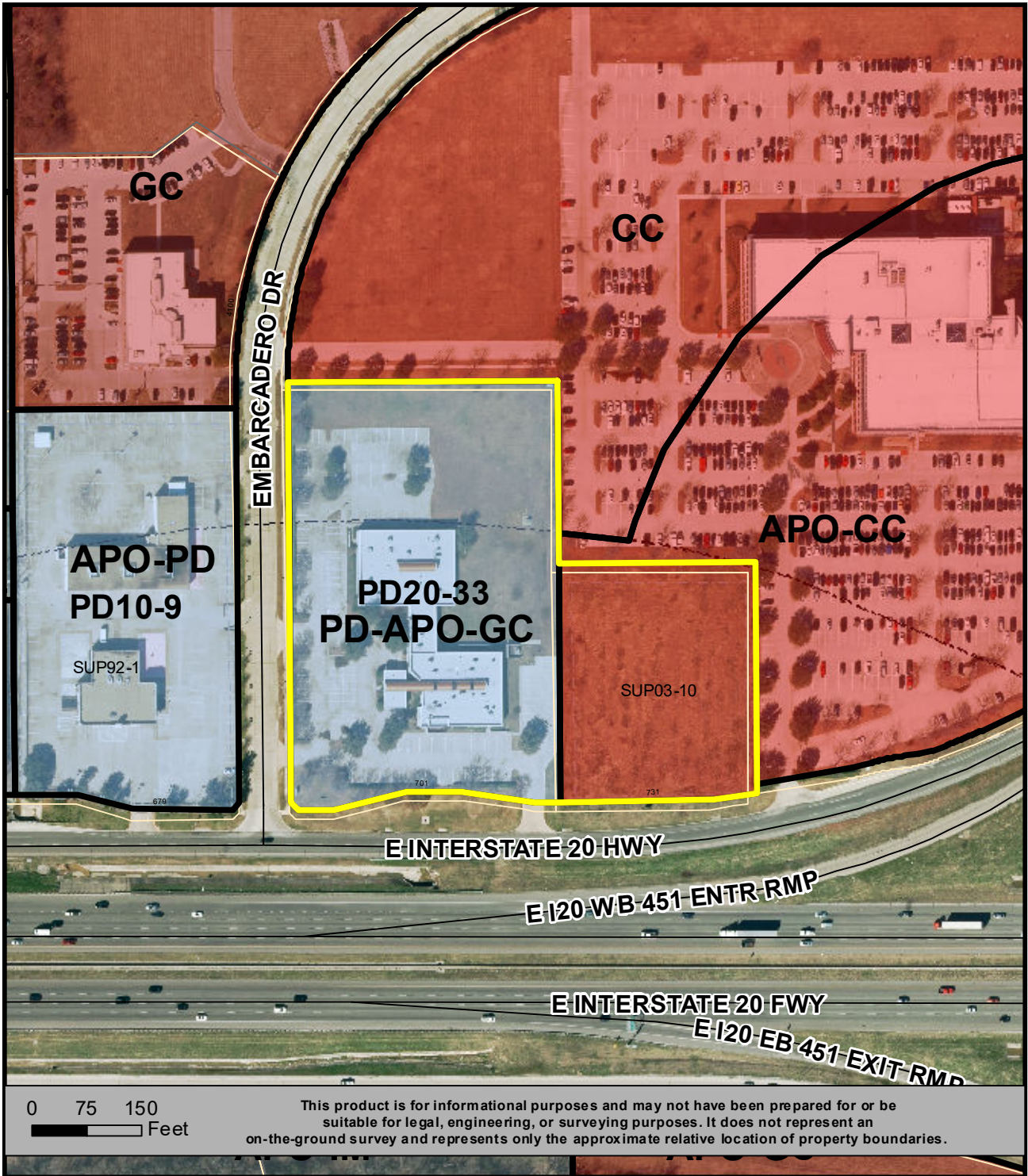
GENERAL LOCATION: 701 and 731 East Interstate 20 Highway; generally located north of East Interstate 20 Highway and south of Embarcadero Drive.

REQUESTED ZONING: Application for approval of a Planned Development (PD) for Airport Overlay-General Commercial (APO-GC) uses plus Motor vehicle sales, new and used, with a Development Plan on approximately 6.855 acres currently zoned for Airport Overlay General Commercial (APO-GC) and Airport Overlay Community Commercial.


APPLICANT: Mycoskie and Associates, Inc., represented by Jacob Sumpter

OWNER: Fort Brew Realty LLC

For additional information concerning this upcoming public hearing, call Kevin Charles in Planning and Development Services at 817-459-6515 and refer to PD21-24.



LOCATION MAP
PD21-24

 **PD FOR APO-GC USES PLUS
NEW AND USED MOTOR
VEHICLE SALES**

